



Instructions for the placement of a Scotsman ice machine on a **BL1048S, BL1360S, or BL1660S** upright ice storage bin.

## Overview

---

The bin top is secured to the bin at the factory and has a large opening that must be covered by ice machine(s) and/or filler panel(s). Each bin ships with the appropriate filler panels, gasket, and sealant to support most Scotsman ice machines. The general procedure for installing the top is the same for all applications, however panel and gasket placement varies by bin/machine configuration.

## Installation

---

1. Identify appropriate drawing for the specific ice machine and bin configuration using the table on page 2.
2. Position filler panel(s) according to location noted on appropriate drawing.
3. Peel paper backing from adhesive portion of filler panel(s) and apply to bin top.
4. Apply inner gasket around perimeter of ice drop opening. Do not overlap gasket.
5. Position and apply outer gasket according to location noted on appropriate drawing.
6. Apply sealant to inside edge of inner gasket that will seal machine and to bin.
7. Carefully position ice maker onto bin.

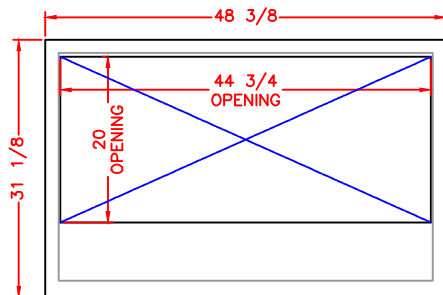
# BL1048S, BL1360S, and BL1660S Bin Top Installation Instructions

## Contents

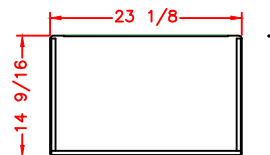
Overview .....	Page 1
Installation .....	Page 1
<b>BL1048S .....</b>	<b>Page 3</b>
BL1048S - Single 22" Cuber .....	Page 3
BL1048S - Two 22" Cubers .....	Page 3
BL1048S - Single 30" Cuber .....	Page 3
BL1048S - Single EH330/430 or MC330L/430 .....	Page 3
BL1048S - Single 48" Cuber .....	Page 4
BL1048S - Single 22" Flake or Nugget .....	Page 4
BL1048S - Two 22" Flake or Nugget .....	Page 4
BL1048S - Single 30" Flake or Nugget .....	Page 4
BL1048S - Single 42" Flake .....	Page 4
<b>BL1360S/BL1660S .....</b>	<b>Page 5</b>
BL1360S/BL1660S - Single 22" Cuber .....	Page 5
BL1360S/BL1660S - Two 22" Cubers .....	Page 5
BL1360S/BL1660S - Single 30" Cuber .....	Page 5
BL1360S/BL1660S - Single EH330/430 or MC330L/430 .....	Page 5
BL1360S/BL1660S - Single 48" Cuber .....	Page 6
BL1360S/BL1660S - Single 22" Flake/Nugget .....	Page 6
BL1360S/BL1660S - Two 22" Flake or Nugget .....	Page 6
BL1360S/BL1660S - Single 30" Flake/Nugget .....	Page 6
BL1360S/BL1660S - Single 42" Flake .....	Page 6

## BL1048S

### Bin top and opening:



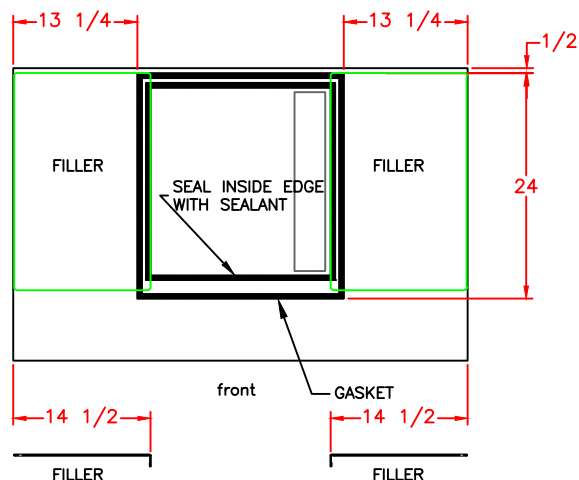
### Filler Panels (2):



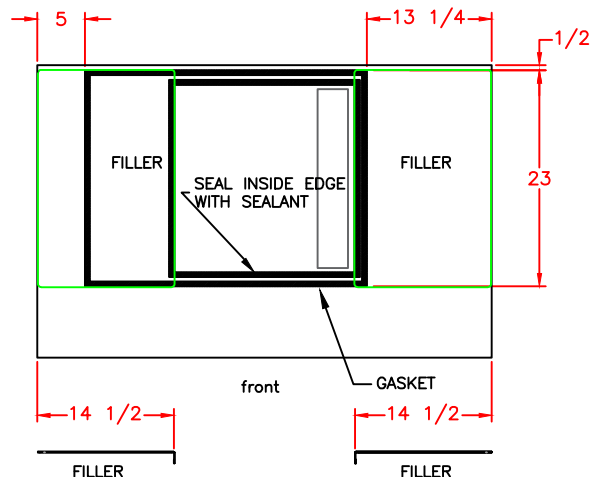
### Also included:

- Self adhesive gasket
- Sealant

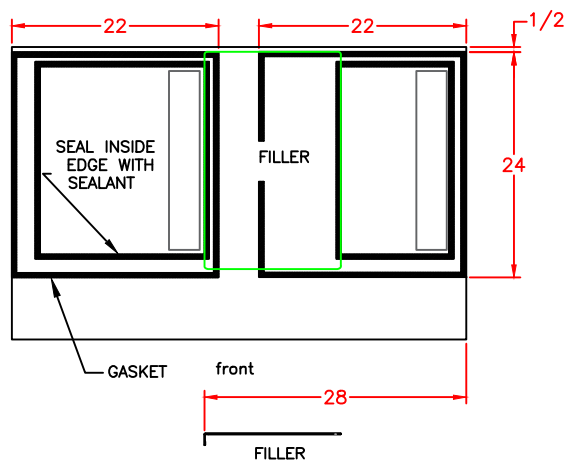
### BL1048S - Single 22" Cuber



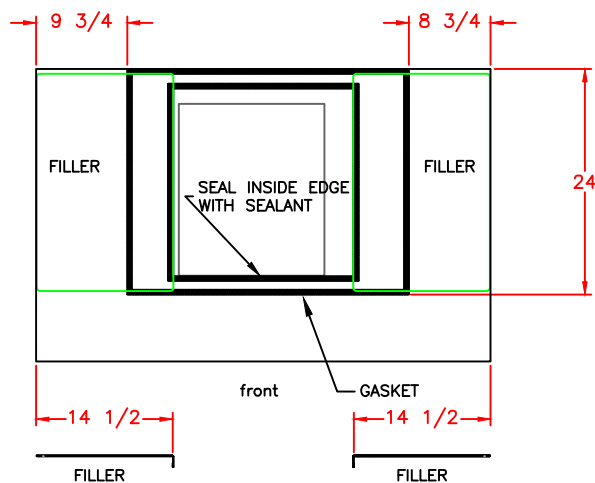
### BL1048S - Single 30" Cuber



### BL1048S - Two 22" Cubers

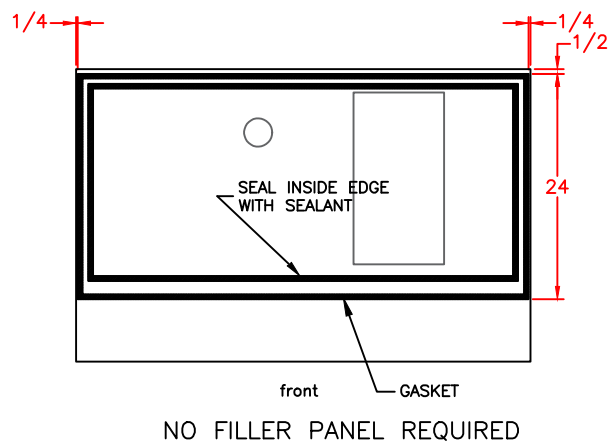


### BL1048S - Single EH330/430 or MC330L/430

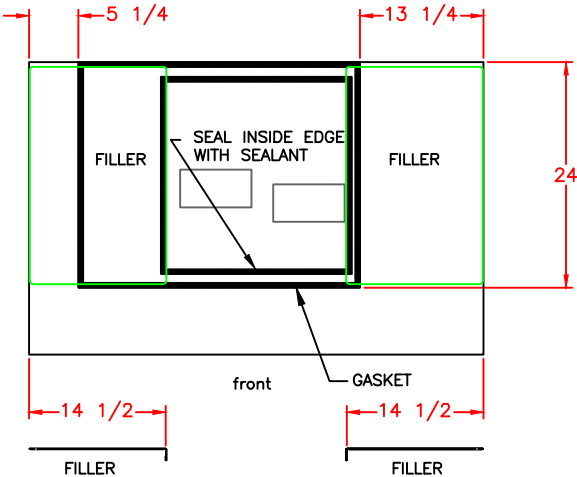


BL1048S, BL1360S, and BL1660S Bin Top Installation Instructions

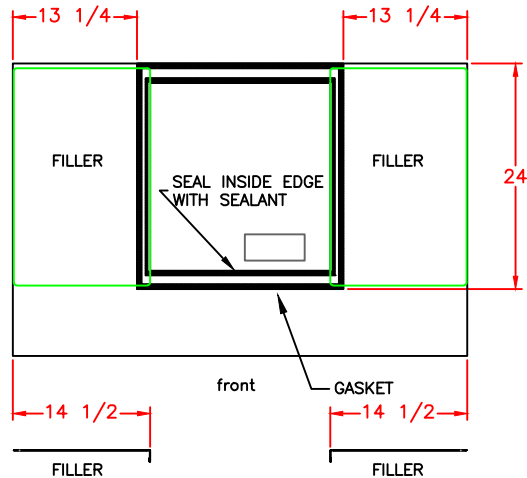
BL1048S - Single 48" Cuber



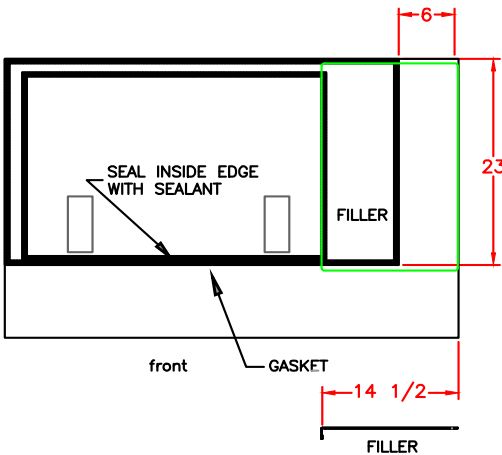
BL1048S - Single 30" Flake or Nugget



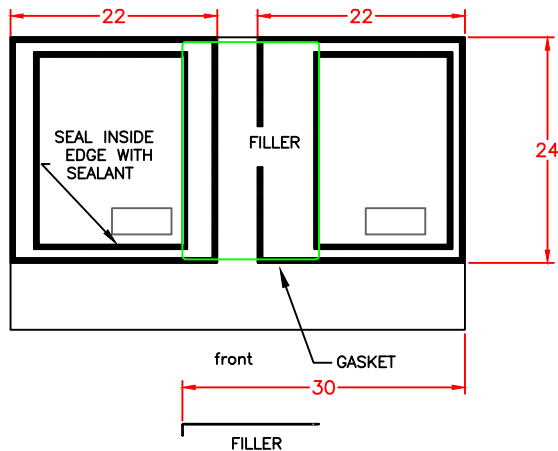
BL1048S - Single 22" Flake or Nugget



BL1048S - Single 42" Flake

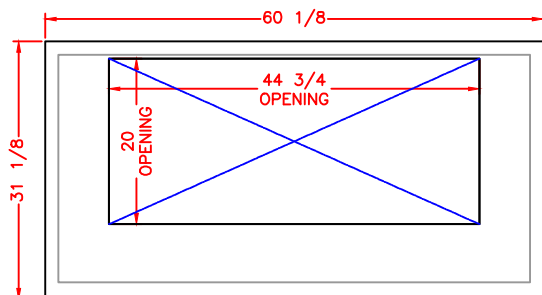


BL1048S - Two 22" Flake or Nugget

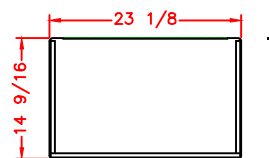


## BL1360S/BL1660S

### Bin top and opening:



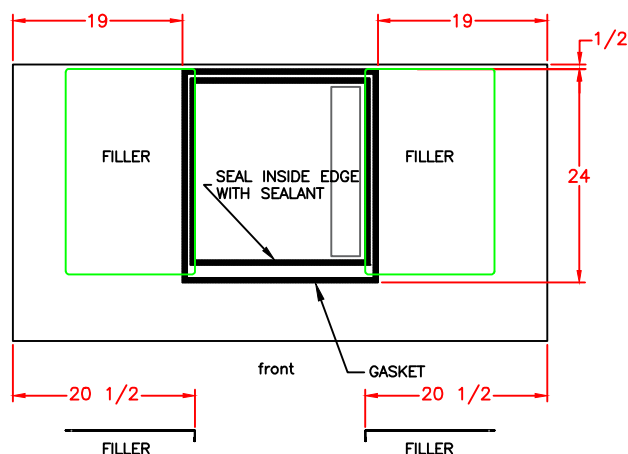
### Filler Panels (2):



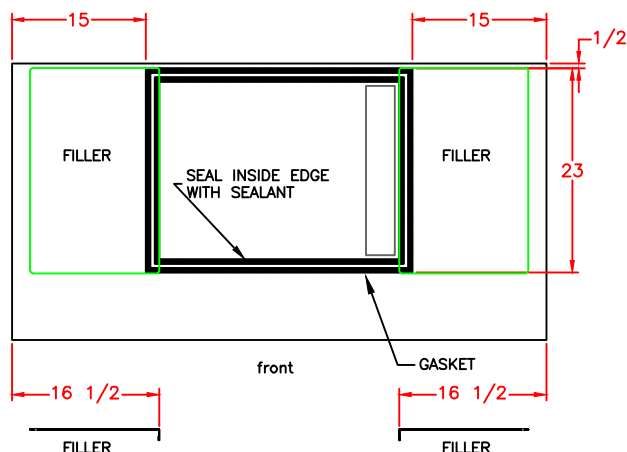
### Also included:

- Self adhesive gasket
- Sealant

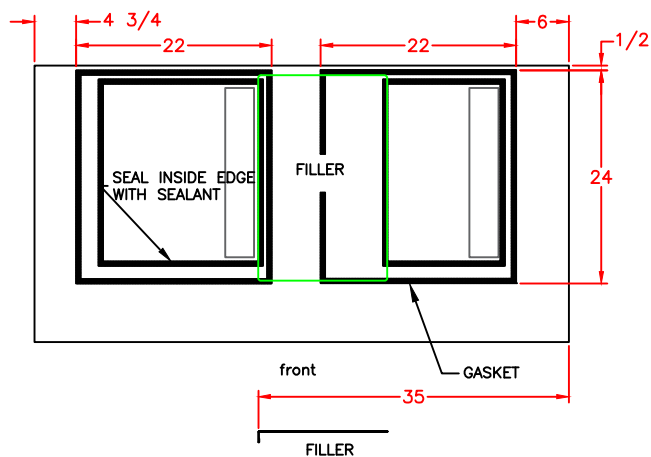
### BL1360S/BL1660S - Single 22" Cuber



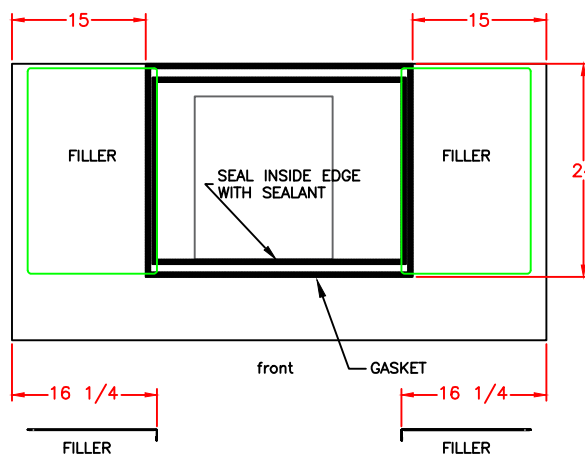
### BL1360S/BL1660S - Single 30" Cuber



### BL1360S/BL1660S - Two 22" Cubers

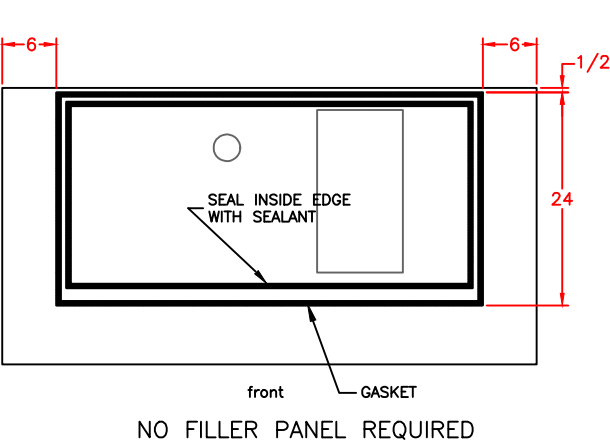


### BL1360S/BL1660S - Single EH330/430 or MC330L/430

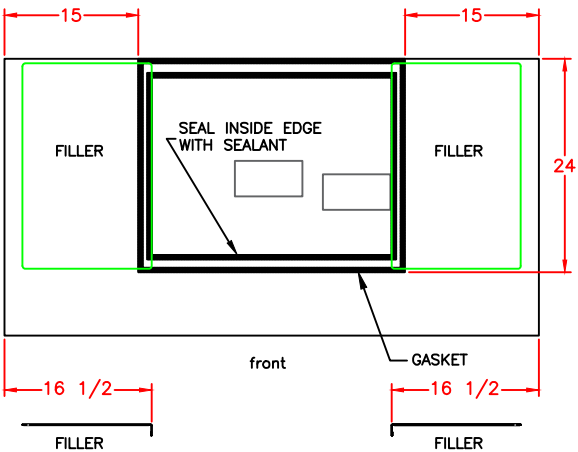


BL1048S, BL1360S, and BL1660S Bin Top Installation Instructions

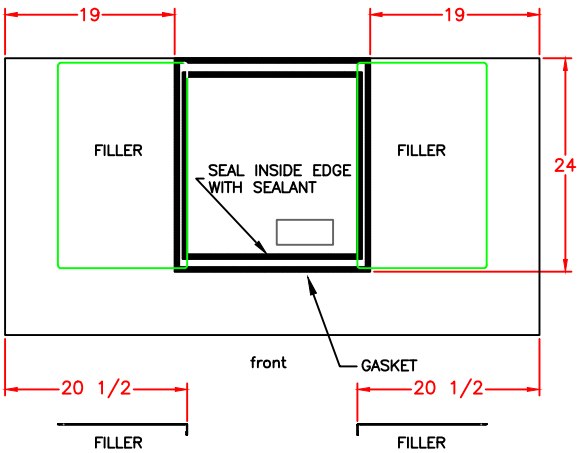
BL1360S/BL1660S - Single 48" Cuber



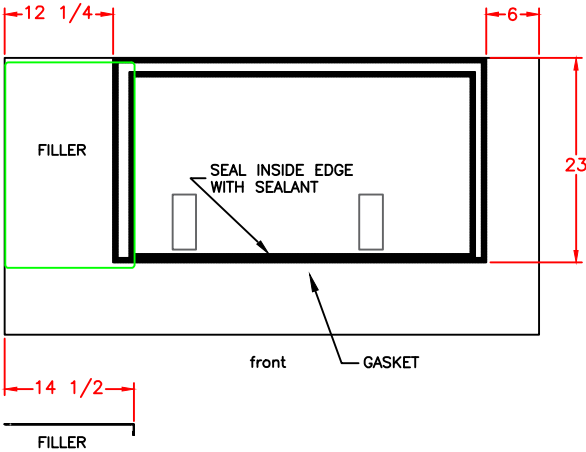
BL1360S/BL1660S - Single 30" Flake/Nugget



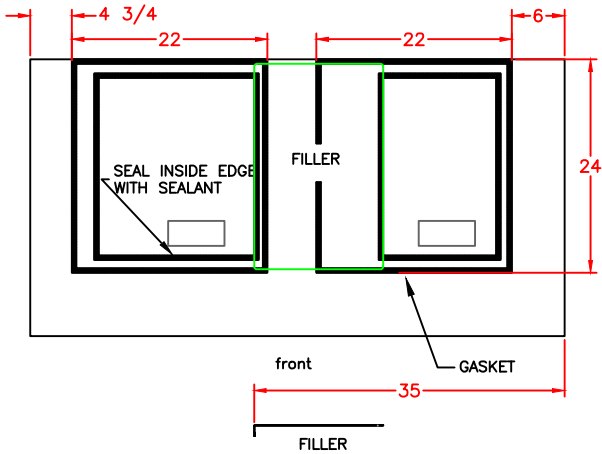
BL1360S/BL1660S - Single 22" Flake/Nugget



BL1360S/BL1660S - Single 42" Flake



BL1360S/BL1660S - Two 22" Flake or Nugget



# **SCOTSMAN ICE SYSTEMS**

101 Corporate Woods Parkway

Vernon Hills, IL 60061

800-726-8762

[www.scotsman-ice.com](http://www.scotsman-ice.com)